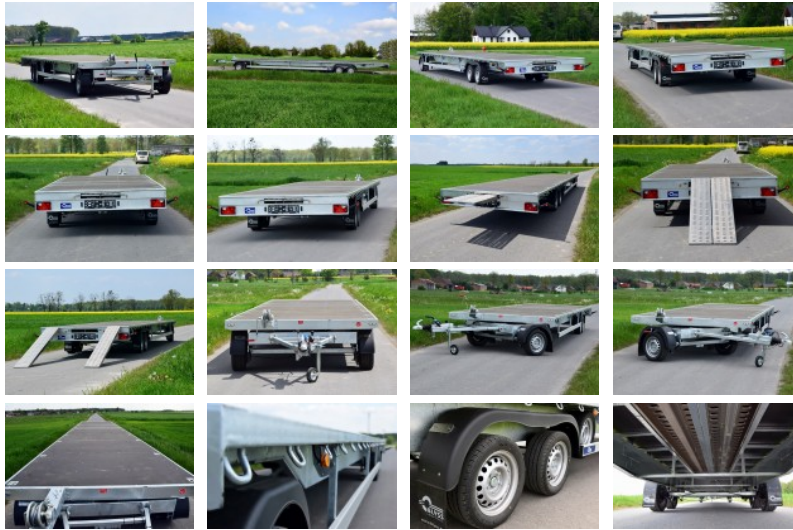







NETTO: 30235.77 ZŁ
BRUTTO: 37190.00 ZŁ

DANE TECHNICZNE

Gesamtgewicht:	3500 kg
Nutzlast:	2180 kg
Ladefläche:	L: 1000 cm, B: 220 cm,
Anzahl der Achsen:	3
Räder:	195/55R13C
Gebremste Achse:	JA
Stützrad	JA
Reserverad	JA
Seilzugwinde	JA



WYPOSAŻENIE OPCJONALNE

1.		Podpory tylne automatyczne	netto: 650.41 zł	brutto: 800.00 zł
2.		Stabilizator jazdy AKS 3504	netto: 1138.21 zł	brutto: 1400.00 zł
3.		Skrzynka narzędziowa Daken 550 z montażem	netto: 235.77 zł	brutto: 290.00 zł